



**Stadt Biel  
Ville de Bienne**

Wirtschaft / Statistik  
Économie / Statistique

PERSPECTIVES  
**DYNAMIC**

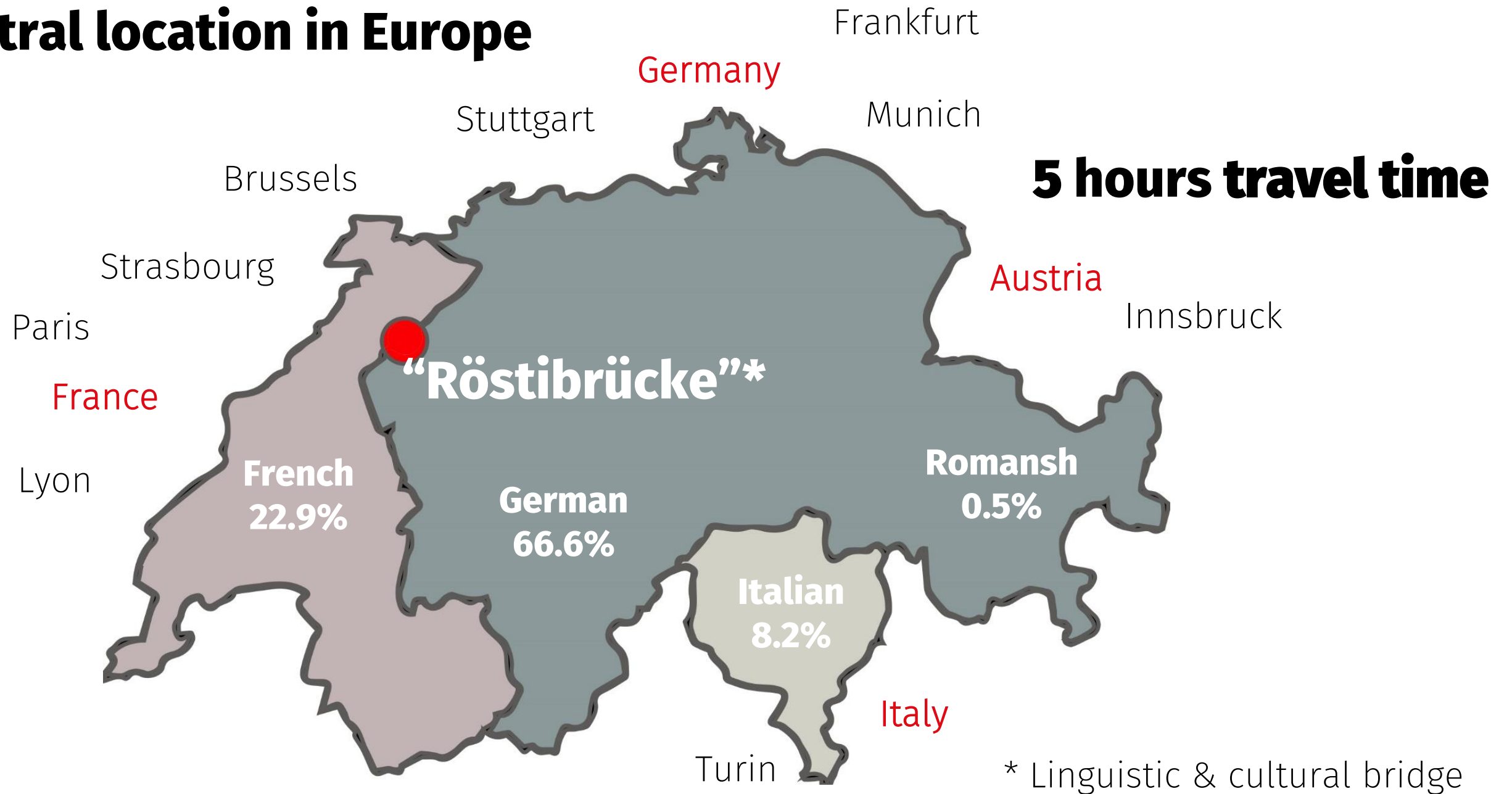


OPPORTUNITIES  
**INNOVATIVE**

# **Biel/Bienne as a business location**

A prime location for companies

# Central location in Europe



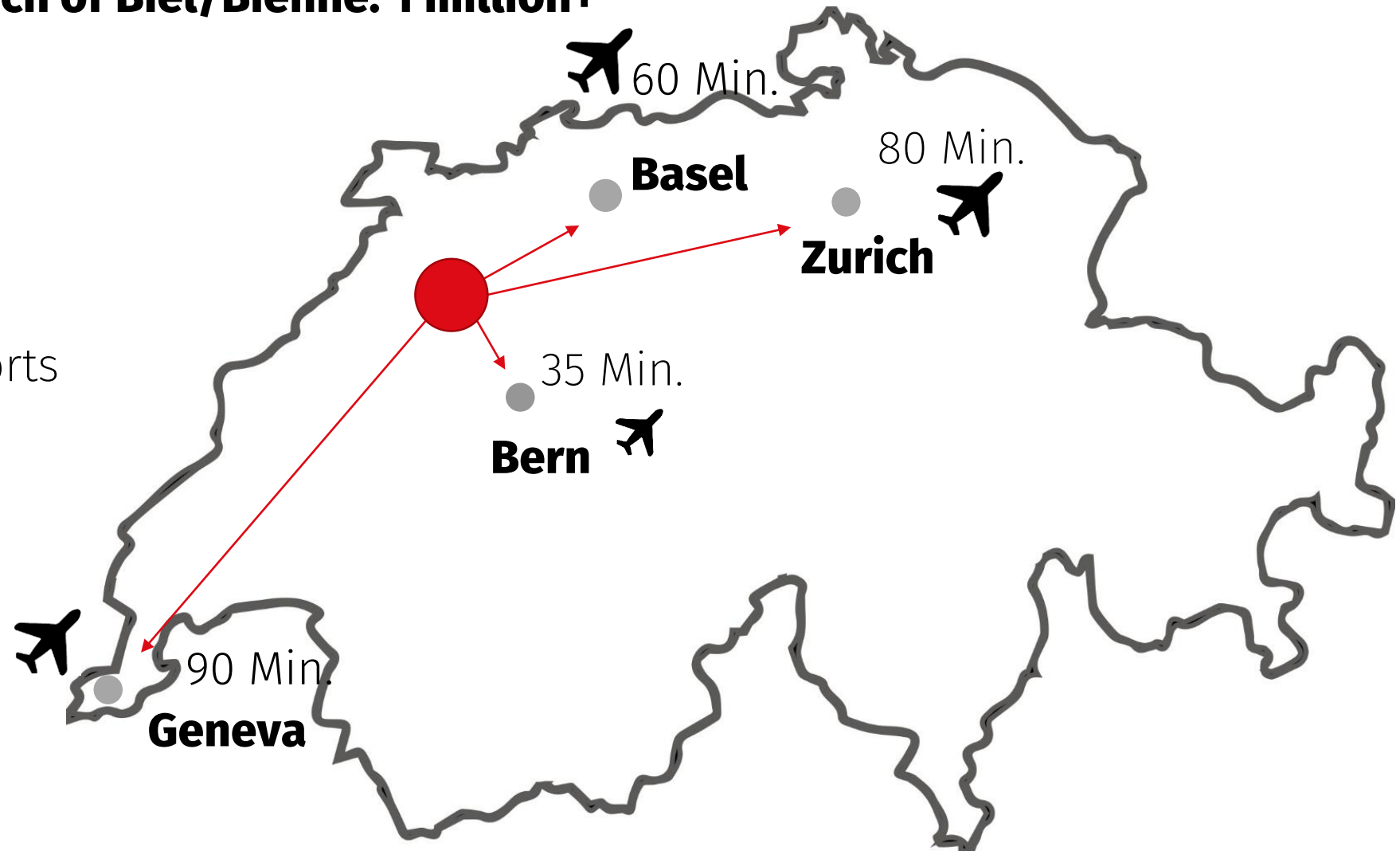
# Central location in Switzerland

**Population within easy reach of Biel/Bienne: 1 million+**

## **Within 1.5h travel time:**

- Major Swiss cities
- Three international airports

**Connected to principal road and rail networks**





# Lake and mountains a stone's throw apart

**Alt. 875 m.**

*"Half an hour ago, I was still in the North, up there, standing atop a chilly mountain ridge and there, suddenly, in a strangely short time, I found myself in the middle of the South, in the heat of the sun, in the heart of the furnace".*

Seeland, Trip report  
Robert Walser

**Alt. 437 m.**



[Biel-Bienne-Seeland Tourism](#)



# Outstanding quality of life

## Exceptional environment

Unspoilt nature, lake and mountains

## Rich cultural and social life

“Coupole” youth centre, City Theatre, Gurzelen, etc

## World-class sporting facilities

Swiss Tennis, Swiss Federal Institute of Sport, etc.



# “City of opportunities”

## **Proactive**

Soft mobility, “LabCity”

## **Full of contrasts**

Medieval centre and industrial town

## **Audacious**

Robert Walser sculpture + Gurzelen

## **Affordable**

Attractive real estate market

## **Bilingual**

## **Richness unique in Switzerland**

Large number of childcare facilities available makes reconciling work and family life easy.





# The people of Biel/Bienne

**56,355 inhabitants – 43.4% French-speaking – 56.6% German-speaking – 151 nationalities<sup>1)</sup>**

**(Biel/Bienne administrative area – 103,948 inhabitants)**



## Biel/Bienne – bilingual and 10<sup>th</sup> largest city in Switzerland

Sources: 1) Residents' Register of the Resident Registration Office of the City of Biel/Bienne, as of 31.12.2021

2) FSO, STATPOP 2021

# A city tailor-made for business

- Highly skilled workforce
- Leading-edge industrial and technological expertise
- Centres of innovation and education
- Land available for development

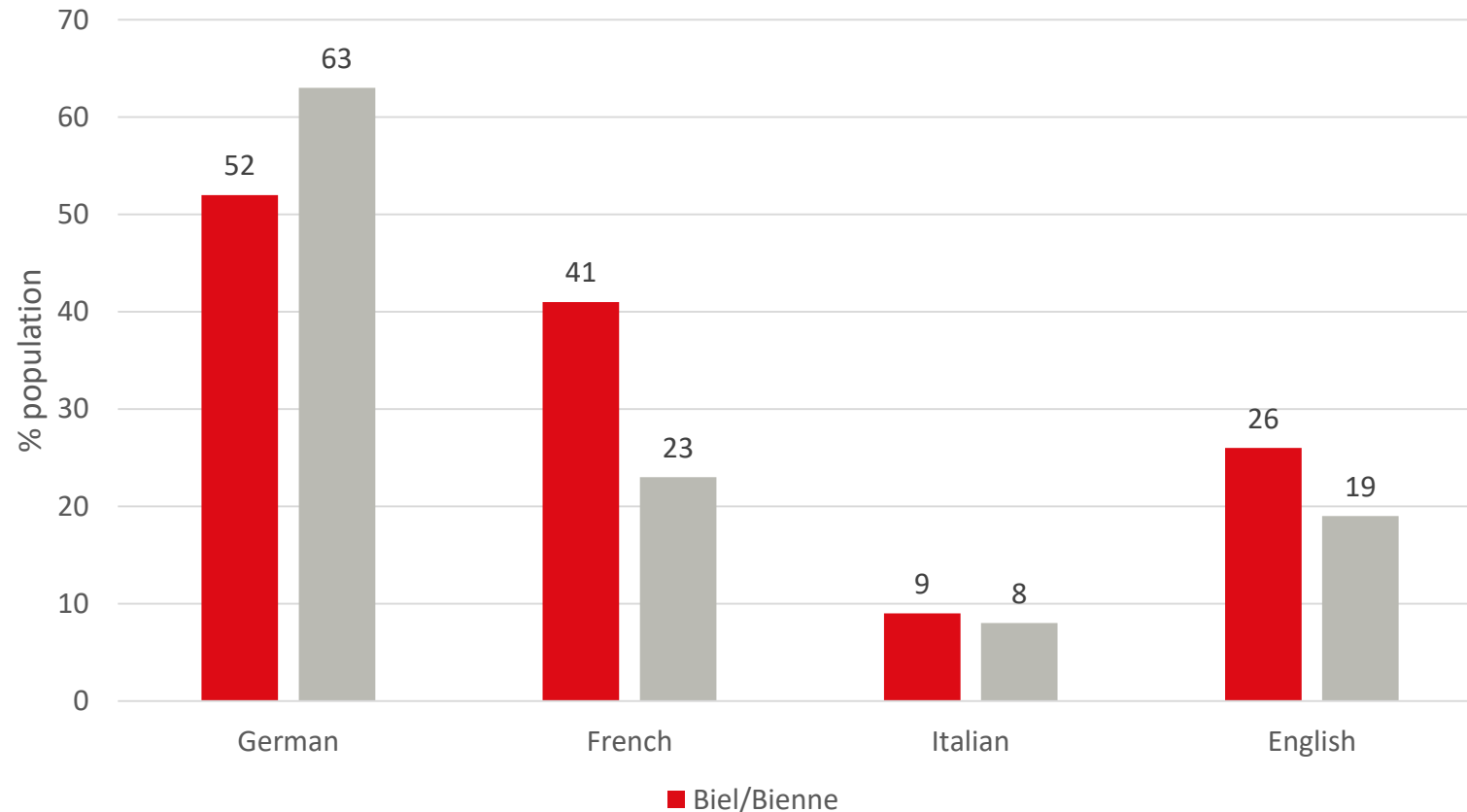
## Ideal framework conditions



Swatch Group – Architecture by Shigeru Ban



# Linguistic skills and export markets



## Multilingualism

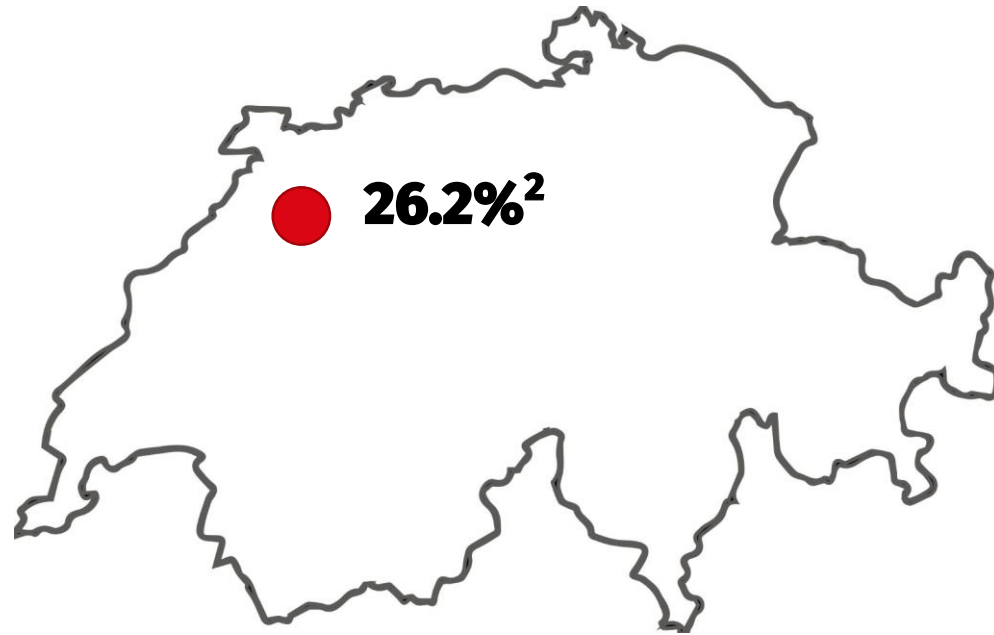
- matching the needs of the EU export markets
- matching the needs of the domestic market

**Exports to EU - Germany 31% • GB 8% • Italy 11% • France and Belgium 14%**

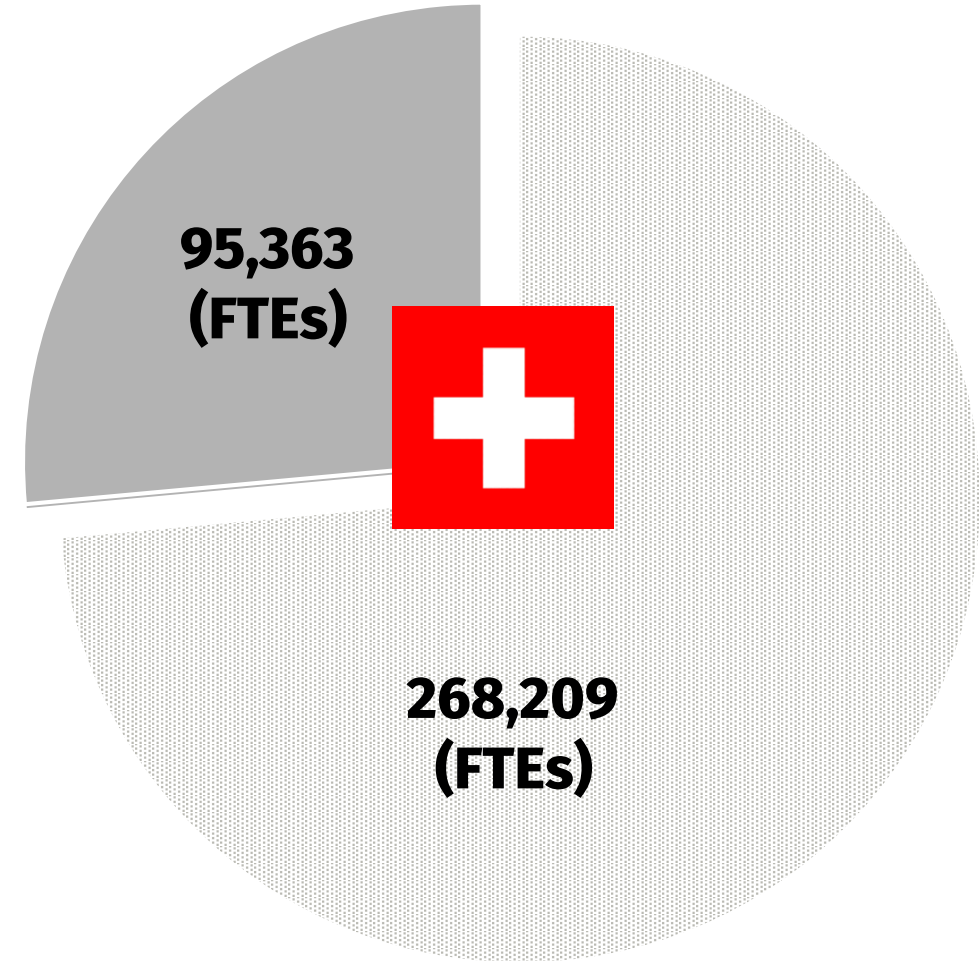
Source: Swiss exports by trading partner 2021, FSO / Main languages of the permanent resident population, 2014-2018

# At the centre of the Swiss high-precision and technology cluster

In Switzerland, more than one-quarter of the 363,572<sup>1</sup> jobs in precision manufacturing are based in the area between Neuchâtel and Solothurn.



**Unique pool of highly skilled labour**



1) NOGA code: 24 + 25; 26-33

2) Cantons: NE, BE, JU, SO. Source: FSO STATENT 2019



# Responsiveness, quality and innovation

Concentration of multi-skilled industrial subcontractors and access to a network of major players in Swiss innovation, enabling new ideas to be transformed into products

- in record time
- with “Swiss made” quality

## Industrial know-how without parallel in Switzerland

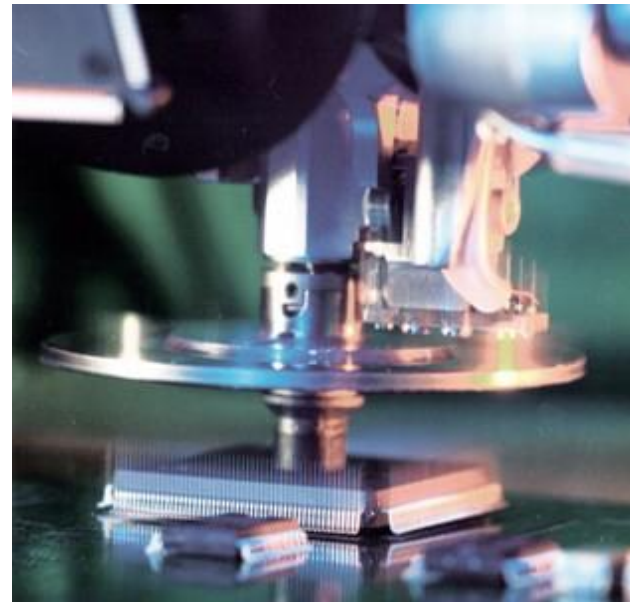
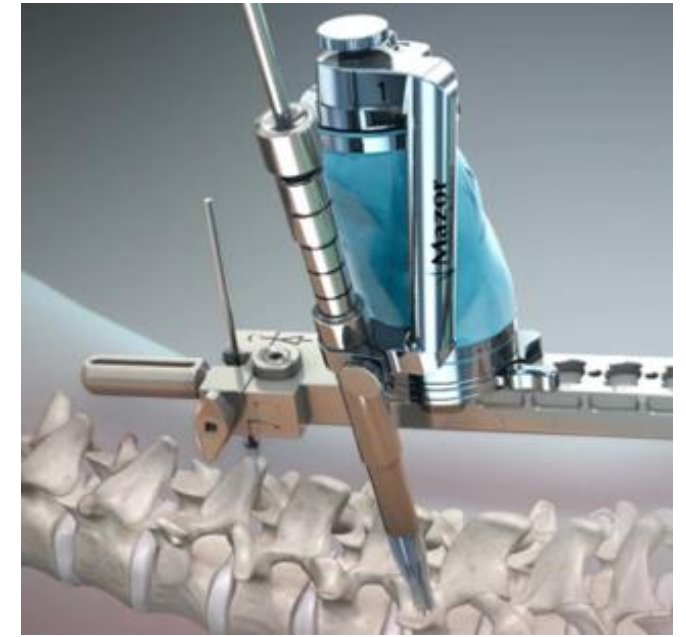
The continuous industrial development in the Arc jurassien region over the past decades is unrivalled elsewhere in Europe.

# Mitteland – Switzerland's 2<sup>nd</sup> largest export region

- CHF 63.9 billions
- 18,4% of total Swiss exports

**More than 2'000 companies in Biel/Bienne**

Source: Federal Office for Customs and Border Security (FOCBS),  
31.05.2022 – Espace Mitteland, exports



[biel/bienne-seeland chamber of commerce](https://www.biel-bienne-seeland.ch/)



# Major watchmaking centre

Concentration of watch brands, industry suppliers and subcontractors



[Federation of the Swiss Watch Industry](#)

# Hub of precision manufacturing

Machining  
Microtechnology  
Turning, cutting  
Surface treatment  
Metrology  
Machine tooling  
Industrial design  
Prototyping  
3D printing  
...

**Industrial know-how without parallel in Switzerland**



[biel/bienne-seeland chamber of commerce](http://biel/bienne-seeland.chamberofcommerce)



# Diversified areas of application

## Multisectoral expertise

- Medical technology
- Orthopaedics
- Optics
- Automotive
- Aeronautics
- ...

Cross-disciplinary applications and transversal skills driven by the high precision traditionally found in the watchmaking industry



# Education with a practical bias



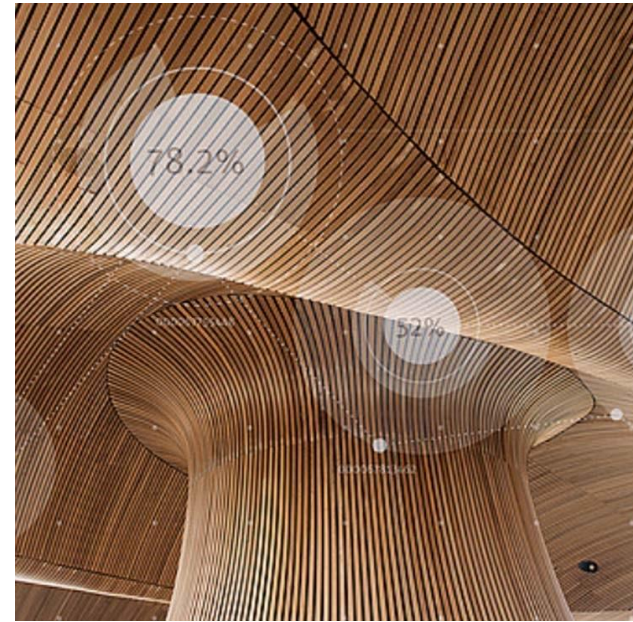
## Bern University of Applied Sciences (BFH)

588 applied research projects

1'325 IT and technology students

981 partnerships projects, incl. 396 with  
the private sector

Source: BFH Annual report (F/D), 2021



[spirit Biel-Bienne](#)

# Bachelors & Masters of Science



## Bachelors

- Electrical engineering and information technology
- Industrial engineering and management science
- Mechanical engineering
- Microtechnology and medical technology
- Automotive engineering
- Computer science
- Medical informatics
- Business administration
- Business Information Technology
- Civil engineering

Source: BFH website , non-exhaustive list

## Masters

- Digital Business Administration
- Business information technology
- Precision Engineering
- Engineering
- Biomedical engineering
- Information technology
- Circular Innovation and Sustainability
- Profile civil engineering
- Business administration

[Berner Fachhochschule](https://www.bfh.ch/)



# Apprenticeship



## Biel-Bienne Technical College

### Federal VET Diploma

- Microtechnics
- Construction
- Electronics
- Machine technics

### Federal Vocational Baccalaureate (FVB)

- Mediamatics

**«Entrepreneurial School of the Year 2019»**

Junior Achievement Europe



[BBZ Biel-Bienne, Technische Fachschule](#)

# Investments of CHF 45 million in Industry 4.0 in Biel/Bienne



## Strategic development focus at the Biel/Bienne site

**The Switzerland Innovation Foundation operates six sites in Switzerland, one of which is in Biel/Bienne**

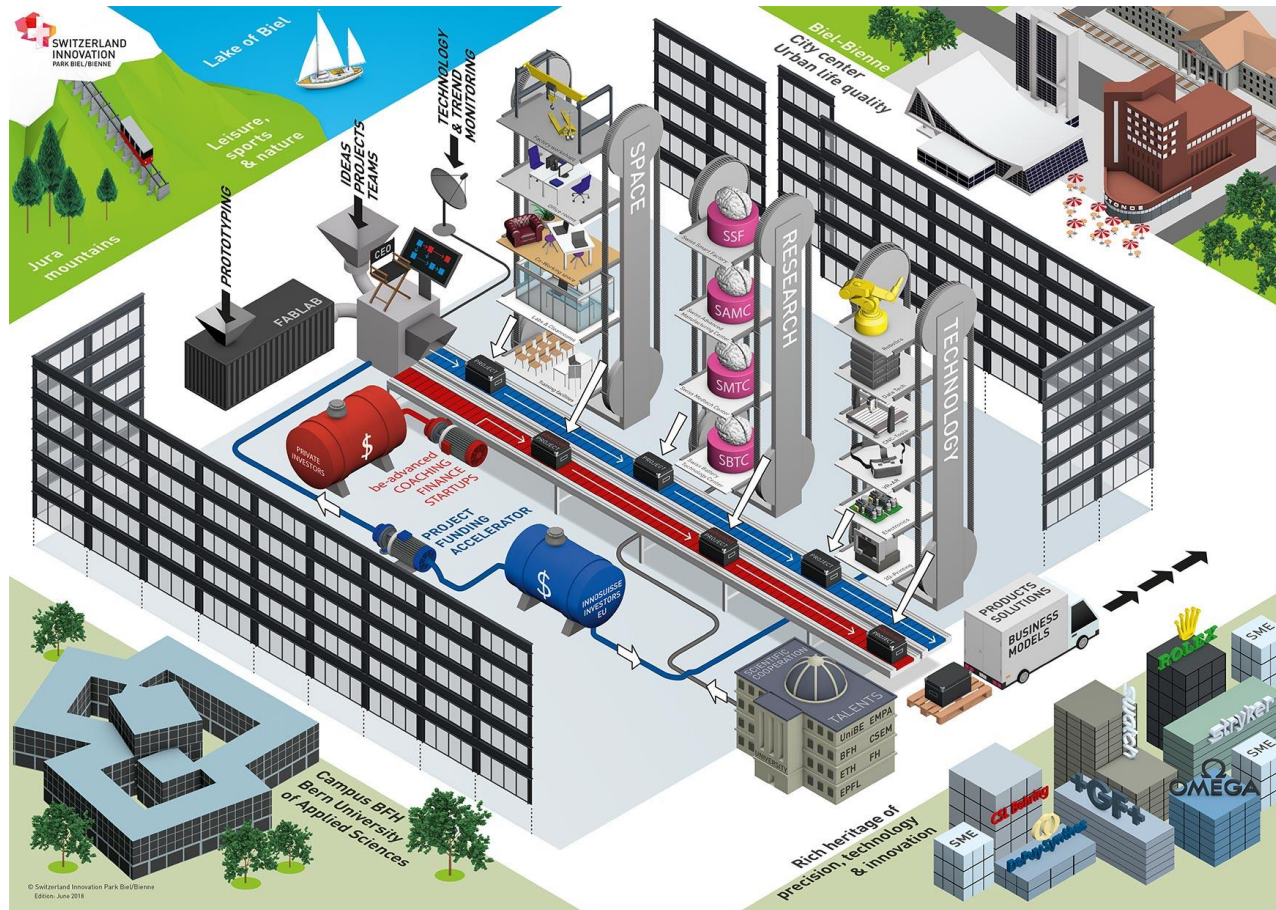


**Switzerland – world leader in innovation for the last 10 years\***

\* Source: Global Innovation Index Database, WIPO, 2021

[Switzerland Innovation Foundation](https://www.swissinnovationfoundation.ch/)

# 15'000m<sup>2</sup> for innovation



**SIPBB building inaugurated in 2021**



- Applied research
- R&D services
- State-of-the-art technological equipment
- Logistical support for innovation
- Rental space

[Switzerland Innovation Park Biel/Bienne](https://www.sipbb.ch/)



# Precision Engineering Business Network



**HARTING**

**FLEURY**  
machines et composants

**STUDER**  
CONCRETE SOLUTIONS

**MANDATEC**

**Amsonic**  
Precision Cleaning

**power integrations**

**DIAMETAL**  
Success with precision

**posalux**

**MEYRAT SA**

**LECUREUX**

**mps**

**POLYDEC** TURNED MICRO PARTS

**+GF+** GF Machining Solutions

**FANUC**  
CNC EUROPE

**STADLER**  
STAHLGUSS

**CENDRES+ MÉTAUX**

**Bien Air**  
Medical Technologies

**JACOT DES COMBES**

**MIKRON**  
Technology Group

**GENERALE RESSORTS**

**Colini**

**Deloro**  
HTM

**DT SWISS**

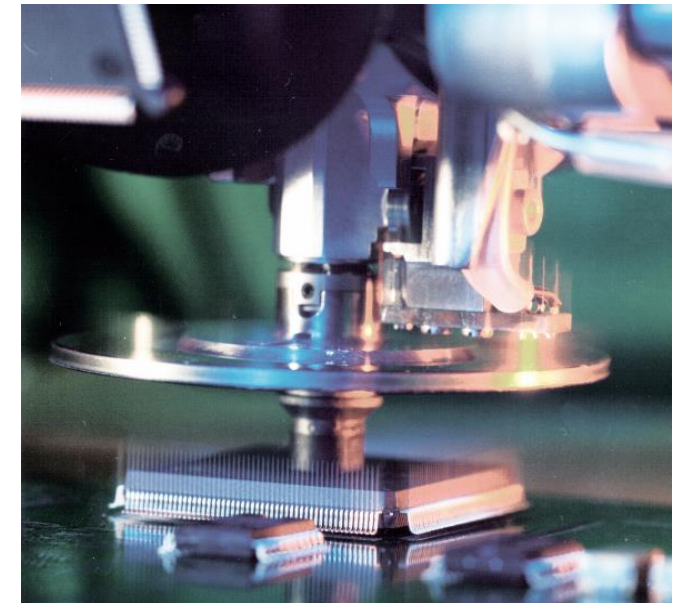
**Non-exhaustive selection**



# Centre of competence for the (ultra-high) precision industry

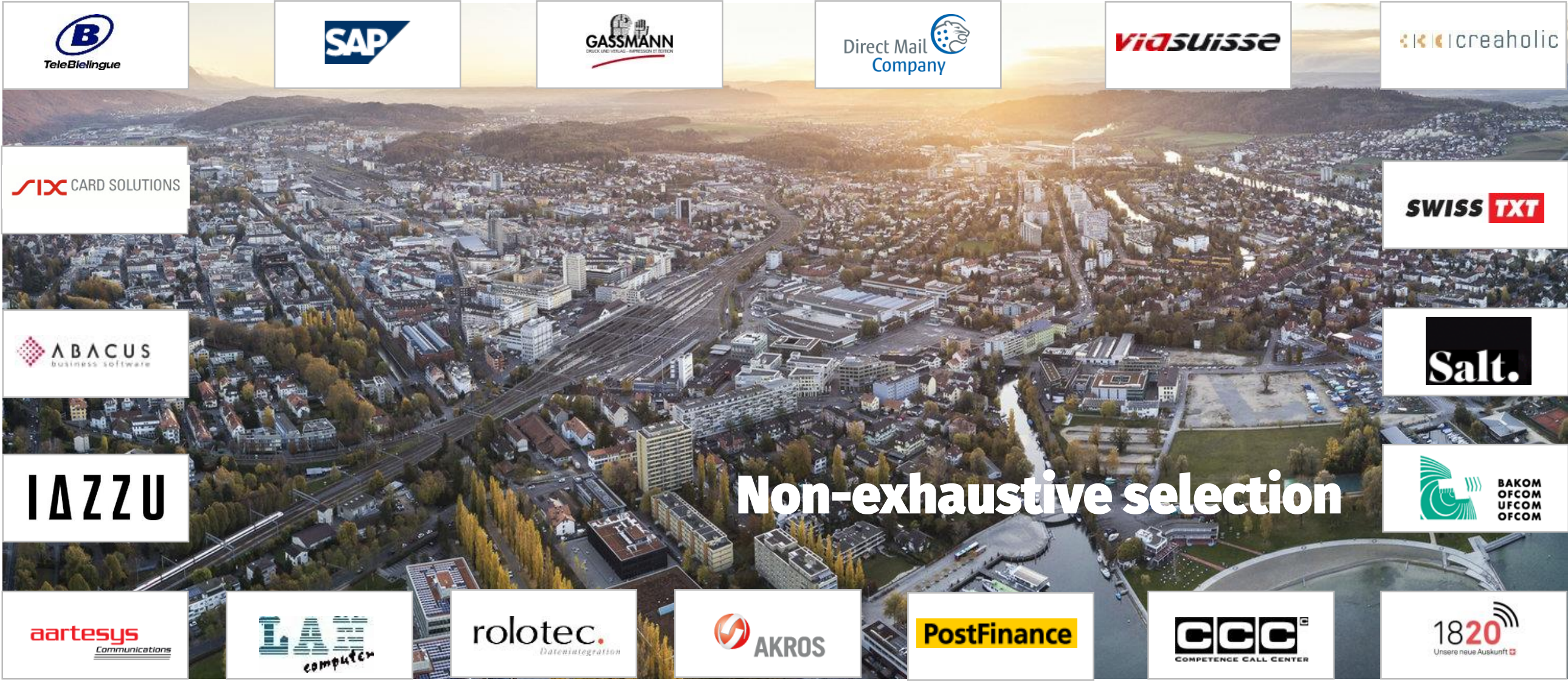
“The concentration of high-tech companies in our area and our proximity to the expertise offered by the College of Engineering and Information Technology provides us with real benefits when looking to identify industrial partners and when recruiting qualified staff.”

Nicola Thibaudeau  
CEO, MPS Micro Precision Systems





# Communication & services



**TeleBilingue**

**SAP**

**GASSMANN**  
DRUCK UND VERLAG - IMPRESSION ET TISSON

**Direct Mail Company**

**vi@suisse**

**creaholic**

**SIX CARD SOLUTIONS**

**SWISS TXT**

**ABACUS**  
business software

**Salt.**

**IAZZU**

**Non-exhaustive selection**

**BAKOM OFCOM OFCOM OFCOM**

**aartesyS**  
Communications

**LAE**  
computer

**rolotec**  
Datenintegration

**AKROS**

**PostFinance**

**CCC**  
COMPETENCE CALL CENTER

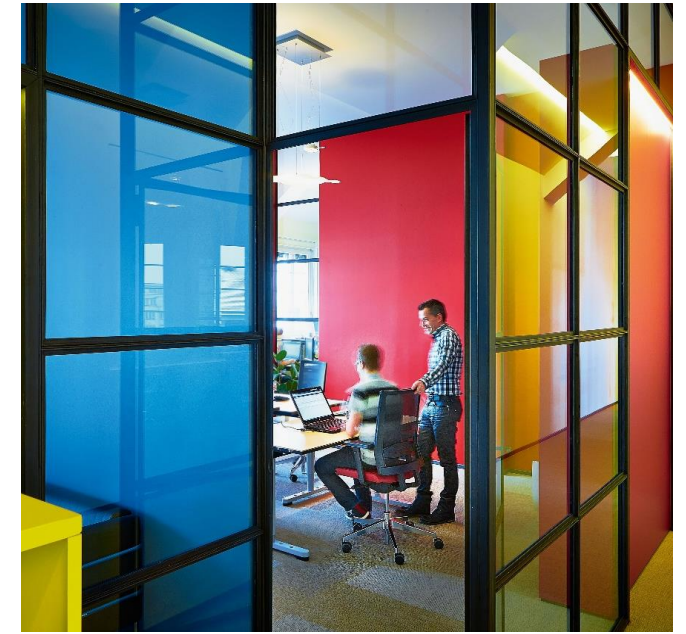
**1820**  
Unsere neue Auskunft



# City of communication

"The Franco-German mix makes Biel/Bienne special in another way, too: the range of facilities available here is comparable with those found in a major city, but without all the hassle and stress. For me, this is a major advantage in terms of quality of life."

Laurent Gfeller, Managing Dir. of Abacus Research SA



"The city of Biel is like SWISS TXT: multilingual, open, innovative and cooperative. As SRG's multimedia competence centre, we have found the ideal location in Biel."

Martin Schneider, CEO SWISS TXT



# A prime location for companies

Ideally situated land available

- Plots of 3'000 to 38'000m<sup>2</sup>

Competitive tax incentives for start-ups

Simplified administrative formalities



[Business assistance from City of Biel/Bienne](#)



For further information, please contact:

Economy / Statistics  
Rue Centrale 49, 2501 Bienne  
032 326 11 21  
[info@biel-bienne.ch](mailto:info@biel-bienne.ch)  
[www.biel-bienne.ch](http://www.biel-bienne.ch)

Photo Copyright:

Cover page: Ben Zurbriggen Fotografie, Biel/Bienne  
Pages 4, 5, 21, 23, 25: Ben Zurbriggen Fotografie, Biel/Bienne  
Page 4: Tourisme Bienne Seeland  
Page 6: Ville de Bienne, Biel/Bienne  
Page 8: Swatch Group  
Page 12: MPS, Strom, Christoph Stöh Grünig, Biel/Bienne  
Page 22: MPS  
Pages 18, 24, 27: Stöh Grünig, Biel/Bienne

Last updated: July 2023

